



**REMOTE CONTROL WELD OSCILLATION HEAD**



Ideal for heavy fabrication industries such as: Shipbuilding, Tank Welding, Pipeline and Bridge Construction

Electronic weld center line adjustment

Electronic stroke width adjustment

Precise oscillation speed control

Stores up to 10 different weld programs for quick recall of frequently used processes

*Linear or Radial Oscillation Capability*

VERSATILE REMOTE CONTROLLED WELD OSCILLATION HEAD



## SPECIFICATIONS

Linear Oscillator Head - GK-201-100-RC*-L	
Oscillation Speed	0.5 - 140 in/min (1 - 355 cm/min)
Oscillation Width	0.09 - 2.5 in (0.23 - 6.35 cm)
Total Slide Distance	4 in (10.2 cm)
Motor	24 VDC Stepper Motor
Weight	5.5 lb (2.5 kg)
Dimensions	10-1/4 x 3-1/4 x 2-3/8 in (26.0 x 8.3 x 6.0 cm)

Radial Oscillator Head - GK-201-100-RC*-R	
Oscillation Speed	1° - 45° per second
Oscillation Width	0.8° - 45°
Total Slide Distance	45°
Motor	24 VDC Stepper Motor
Weight	3.9 lb (1.75 kg)
Dimensions	4-7/8 x 2-3/4 x 3-1/2 in (12.4 x 7.0 x 8.9 cm)

### ELECTRONIC CENTRELINE ADJUSTMENT

With independent, electronically controlled dwells (0-5 sec.) at each end of the stroke and at the centre of the stroke path.

### OSCILLATION SPEED CONTROL

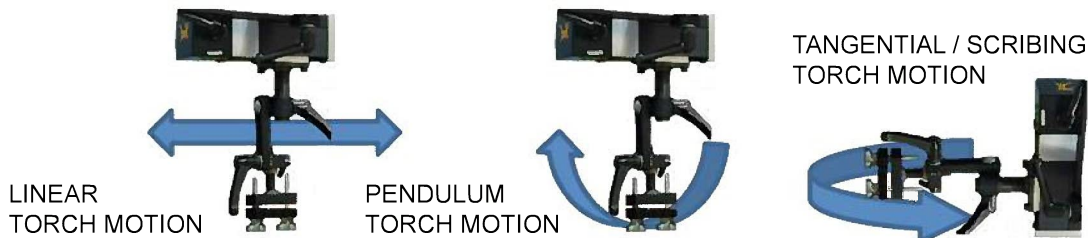
Oscillation speed is electronically controlled by a speed potentiometer (140 inches per minutes (linear) 45° per second (radial)).

### ELECTRONIC STROKE WIDTH

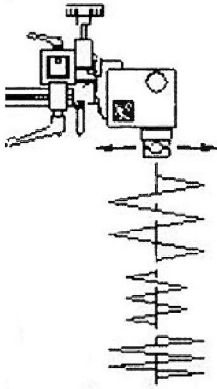
Easy, precise adjustment to provide the required weld pattern.

### TANGENTIAL AND PENDULUM OR LINEAR MOTION

The oscillator heads are capable of producing three distinct motions when mounted in either the horizontal or vertical position. On the left is a linear motion on the right is a tangential or scribing motion, in the middle is a pendulum motion both created using the radial oscillation head.

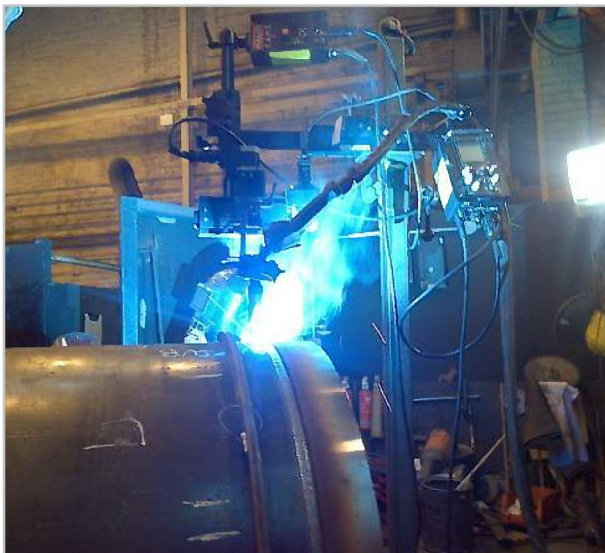
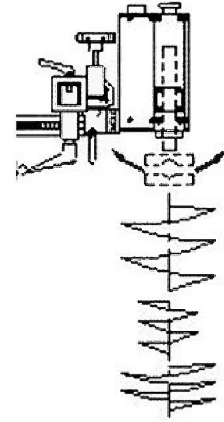


## LINEAR OSCILLATOR PATTERN



The weld oscillation head can produce a variety of welding patterns based on oscillation speed, dwell times and head or workpiece movement. The versatility and durability of the head makes the oscillator perfect for a variety of welding applications including, shipbuilding, tank welding, pipe welding, overhead welding and a list of other fabrication applications where weld oscillation is necessary.

## RADIAL OSCILLATOR PATTERN



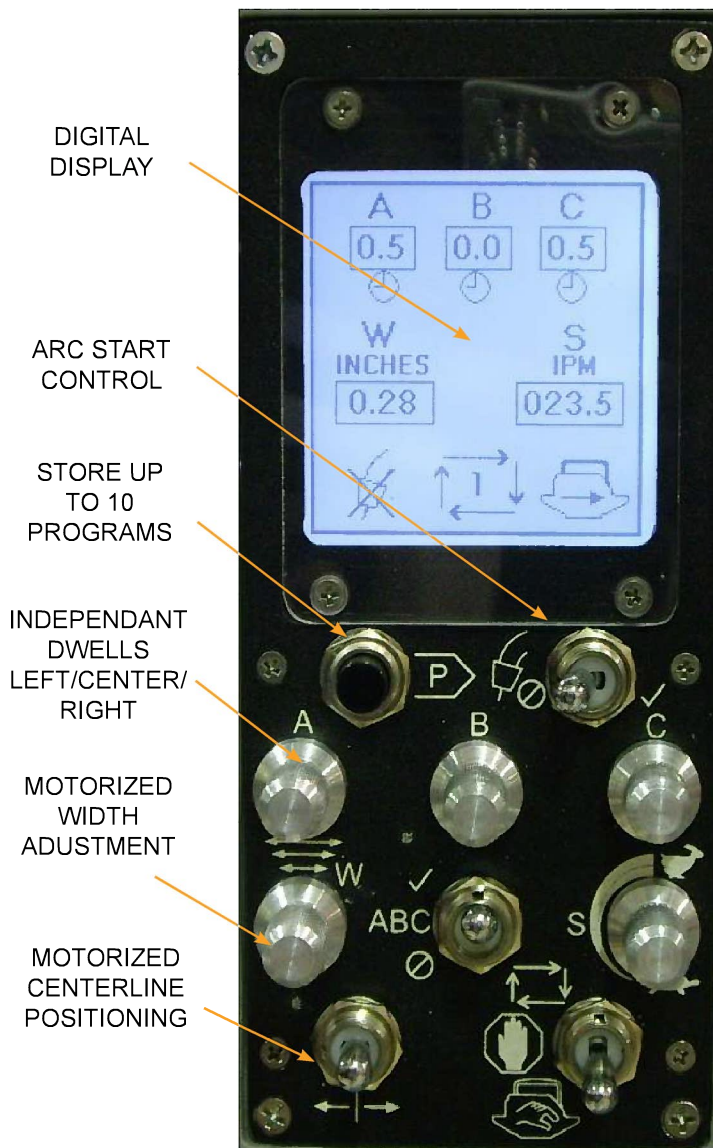
The remote control oscillator is ideal for use with a manipulator stand (KR-1000-WSB) and excels in pipe welding applications in combination with a weld positioner. \*support stand and bracketry sold separately

## Combining High Precision With Exceptional Versatility





## OSCILLATOR CONTROL



This advanced oscillation package is designed to increase production and improve the quality of the weld produced in automatic mechanized welding operations by minimizing weld defects such as poor penetration, incomplete fusion, overlap and undercut.

The GK-200 Series Remote Control Oscillator comes with the option for linear or radial oscillation head and can be equipped for use with our KAT® Welding Automation Carriage for automating a variety of applications.

The oscillator is available with a linear, pendulum, tangential motion to the welding gun with remote control adjustable oscillation width, variable oscillation speed adjustment, three independent position dwell times, motorized centre line positioning and automatic wire feed start and stop. Other patterns can be achieved when oscillation head is used in combination with the KAT® Carriage.

### KAT® OSCILLATOR CARRIAGE



GULLCO, KAT, KBM, MOGGY, KATBAK & SAM are registered trademarks of Gullco International Limited

SPECIFICATIONS ARE SUBJECT TO CHANGE WITHOUT NOTICE. ALL DIMENSIONS ARE NOMINAL

Distributed by:



**Arcent (Singapore) Pte Ltd**  
 2, Yishun Industrial Street 1  
 Northpoint Bizhub #07-11  
 Singapore 768159  
 Tel: +65 6356 6997  
 Fax: +65 6356 4854  
 sales@arcentwelding.com  
 www.arcentwelding.com

**ARCENT**

**GULLCO.COM**

ROSC-16-01